



Dick's Sporting Goods dba Going, Going, Gone! Net Lease Investment Property For Sale

I-35 & 119th St. (NEC), Olathe, KS | A Kansas City Suburb



JUST LISTED! | FIRST TIME ON THE MARKET

DEMOGRAPHICS

Radius Ring	1 mile	3 miles	5 miles
Estimated Population	7,130	75,320	232,218
Avg. Household Income	\$88,934	\$98,584	\$106,936

DEMOGRAPHICS

Drive Time	5 min	10 min	15 min
Estimated Population	31,865	158,286	349,617
Avg. Household Income	\$91,599	\$95,774	\$105,184

- Going, Going, Gone! by Dick's Sporting Goods just signed a long term net lease
- Below market rent
- The Dick's off-price new concept will offer surprising deals on unique finds in footwear and apparel from the brands customers have enjoyed shopping for at Dick's Sporting Goods for years
- 48,744 SF Building on 6.93 acres
- Johnson County, Kansas is one of the wealthiest counties in the United States according to the US Census Bureau
- Located in one of the fastest growing areas in Greater Kansas City
- Surrounded by over 1.5 million SF of national retailers and restaurants
- Next to Home Depot, across from Super Target and many others

 [CLICK HERE TO VIEW MORE LISTING INFORMATION](#)

For More Information Contact:

Exclusive Agents

ALEX BLOCK | 816.412.7373 | ablock@blockandco.com

MAX KOSOGLAD | 816.412.7363 | mkosoglad@blockandco.com

DAVID BLOCK | 816.412.7400 | dblock@blockandco.com





Dick's Sporting Goods dba Going, Going, Gone!

Net Lease Investment Property For Sale

I-35 & 119th St. (NEC), Olathe, KS | A Kansas City Suburb

DRONE PHOTOS





Dick's Sporting Goods dba Going, Going, Gone!

Net Lease Investment Property For Sale

I-35 & 119th St. (NEC), Olathe, KS | A Kansas City Suburb

DRONE PHOTOS





Dick's Sporting Goods dba Going, Going, Gone! Net Lease Investment Property For Sale

I-35 & 119th St. (NEC), Olathe, KS | A Kansas City Suburb

**JUST LISTED!
FIRST TIME ON
THE MARKET**

AERIAL



All information furnished regarding property for sale or lease is from sources deemed reliable, but no warranty or representation is made as to the accuracy thereof and the same is subject to errors, omissions, changes of prices, rental or other conditions, prior sale or lease or withdrawal without notice.

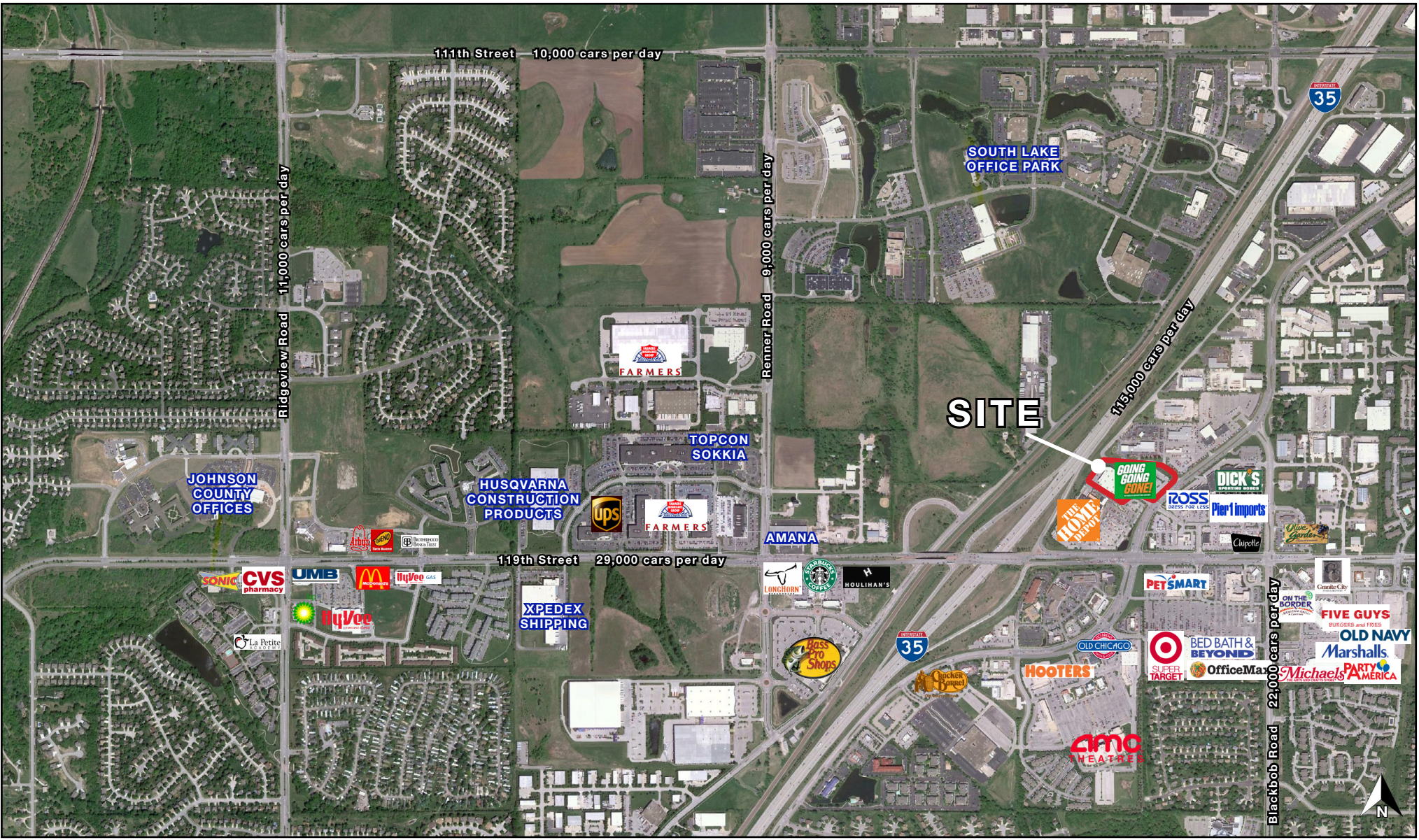


Dick's Sporting Goods dba Going, Going, Gone! Net Lease Investment Property For Sale

I-35 & 119th St. (NEC), Olathe, KS | A Kansas City Suburb

**JUST LISTED!
FIRST TIME ON
THE MARKET**

AERIAL



All information furnished regarding property for sale or lease is from sources deemed reliable, but no warranty or representation is made as to the accuracy thereof and the same is subject to errors, omissions, changes of prices, rental or other conditions, prior sale or lease or withdrawal without notice.



Dick's Sporting Goods dba Going, Going, Gone!

Net Lease Investment Property For Sale

I-35 & 119th St. (NEC), Olathe, KS | A Kansas City Suburb

JUST LISTED!
FIRST TIME ON
THE MARKET

SITE PLAN



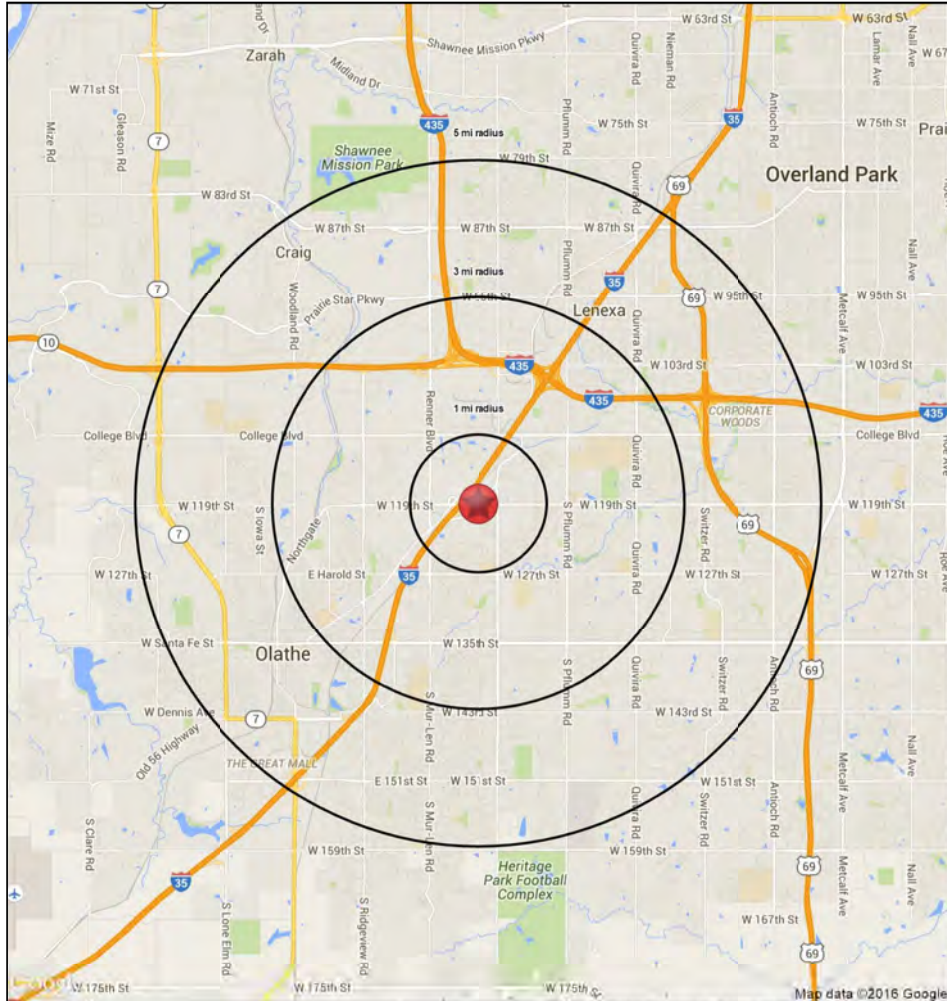


Dick's Sporting Goods dba Going, Going, Gone! Net Lease Investment Property For Sale

I-35 & 119th St. (NEC), Olathe, KS | A Kansas City Suburb

**JUST LISTED!
FIRST TIME ON
THE MARKET**

1-3-5 MILE RADIUS RING MAP & DEMOS



11750 S Strang Line Rd Olathe, KS 66062		1 mi radius	3 mi radius	5 mi radius
POPULATION	2021 Estimated Population	7,130	75,320	232,218
	2026 Projected Population	7,265	77,216	238,000
	2010 Census Population	6,864	68,843	213,776
	2000 Census Population	5,529	60,439	182,502
	Projected Annual Growth 2021 to 2026	0.4%	0.5%	0.5%
	Historical Annual Growth 2000 to 2021	1.4%	1.2%	1.3%
HOUSEHOLDS	2021 Median Age	32.4	36.7	36.8
	2021 Estimated Households	3,391	30,549	92,507
	2026 Projected Households	3,537	32,215	97,529
	2010 Census Households	3,115	27,006	82,179
	2000 Census Households	2,115	22,549	67,708
	Projected Annual Growth 2021 to 2026	0.9%	1.1%	1.1%
RACE AND ETHNICITY	Historical Annual Growth 2000 to 2021	2.9%	1.7%	1.7%
	2021 Estimated White	76.5%	80.1%	80.3%
	2021 Estimated Black or African American	7.0%	6.3%	6.0%
	2021 Estimated Asian or Pacific Islander	8.0%	6.1%	6.4%
	2021 Estimated American Indian or Native Alaskan	0.4%	0.4%	0.4%
	2021 Estimated Other Races	8.1%	7.0%	6.8%
INCOME	2021 Estimated Hispanic	11.0%	10.3%	9.7%
	2021 Estimated Average Household Income	\$88,934	\$98,584	\$106,936
	2021 Estimated Median Household Income	\$70,960	\$87,923	\$93,298
EDUCATION (AGE 25+)	2021 Estimated Per Capita Income	\$42,410	\$40,052	\$42,655
	2021 Estimated Elementary (Grade Level 0 to 8)	4.6%	2.3%	2.1%
	2021 Estimated Some High School (Grade Level 9 to 11)	3.3%	2.8%	2.7%
	2021 Estimated High School Graduate	17.2%	16.1%	15.0%
	2021 Estimated Some College	18.0%	18.9%	18.1%
	2021 Estimated Associates Degree Only	11.3%	8.0%	7.9%
BUSINESS	2021 Estimated Bachelors Degree Only	32.0%	34.3%	34.7%
	2021 Estimated Graduate Degree	13.6%	17.5%	19.4%
	2021 Estimated Total Businesses	653	3,639	8,438
	2021 Estimated Total Employees	11,685	66,129	143,256
	2021 Estimated Employee Population per Business	17.9	18.2	17.0
	2021 Estimated Residential Population per Business	10.9	20.7	27.5

©2021, Sites USA, Chandler, Arizona, 480-491-1112

page 1 of 1

Demographic Source: Applied Geographic Solutions 5/2021, TIGER Geography



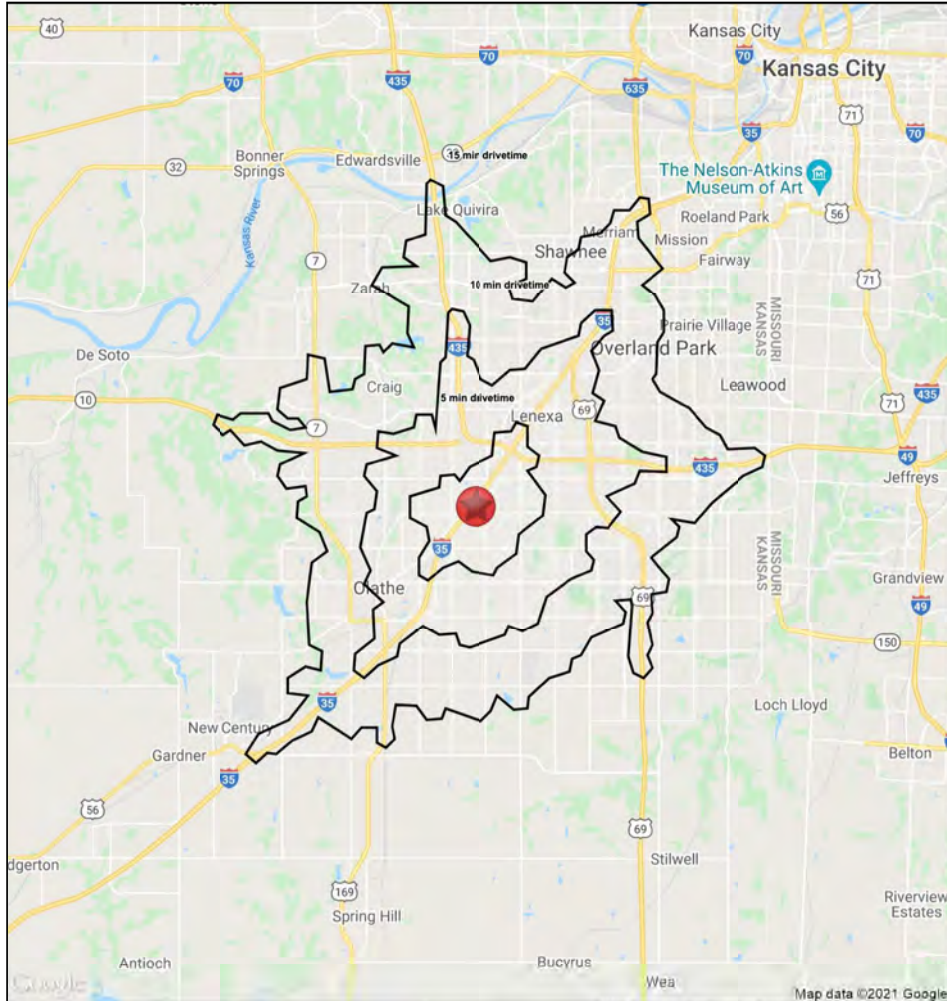


Dick's Sporting Goods dba Going, Going, Gone! Net Lease Investment Property For Sale

I-35 & 119th St. (NEC), Olathe, KS | A Kansas City Suburb

**JUST LISTED!
FIRST TIME ON
THE MARKET**

5-10-15 MINUTE DRIVE TIME MAP & DEMOS



		5 min drivetime	10 min drivetime	15 min drivetime
11750 S Strang Line Rd				
Olathe, KS 66062				
POPULATION	2021 Estimated Population	31,865	158,286	349,617
	2026 Projected Population	32,391	161,154	357,769
	2010 Census Population	29,472	145,498	319,921
	2000 Census Population	25,888	132,468	274,743
	Projected Annual Growth 2021 to 2026	0.3%	0.4%	0.5%
	Historical Annual Growth 2000 to 2021	1.1%	0.9%	1.3%
	2021 Median Age	34.8	36.9	37.7
HOUSEHOLDS	2021 Estimated Households	13,244	65,965	142,990
	2026 Projected Households	13,828	69,065	150,401
	2010 Census Households	11,842	58,526	126,355
	2000 Census Households	9,688	51,202	105,964
	Projected Annual Growth 2021 to 2026	0.9%	0.9%	1.0%
	Historical Annual Growth 2000 to 2021	1.7%	1.4%	1.7%
RACE AND ETHNICITY	2021 Estimated White	77.5%	79.2%	80.4%
	2021 Estimated Black or African American	7.4%	6.9%	6.2%
	2021 Estimated Asian or Pacific Islander	6.0%	5.7%	6.1%
	2021 Estimated American Indian or Native Alaskan	0.5%	0.4%	0.4%
	2021 Estimated Other Races	8.6%	7.8%	7.0%
	2021 Estimated Hispanic	12.8%	11.1%	10.2%
INCOME	2021 Estimated Average Household Income	\$91,599	\$95,774	\$105,184
	2021 Estimated Median Household Income	\$79,724	\$83,885	\$90,220
	2021 Estimated Per Capita Income	\$38,155	\$39,999	\$43,090
EDUCATION (AGE 25+)	2021 Estimated Elementary (Grade Level 0 to 8)	3.5%	2.4%	2.1%
	2021 Estimated Some High School (Grade Level 9 to 11)	3.2%	3.1%	2.7%
	2021 Estimated High School Graduate	18.1%	16.1%	16.1%
	2021 Estimated Some College	19.8%	19.1%	18.5%
	2021 Estimated Associates Degree Only	9.4%	8.1%	8.2%
	2021 Estimated Bachelors Degree Only	31.1%	33.5%	33.6%
	2021 Estimated Graduate Degree	14.8%	17.7%	18.8%
BUSINESS	2021 Estimated Total Businesses	1,591	7,915	15,866
	2021 Estimated Total Employees	28,728	145,753	263,080
	2021 Estimated Employee Population per Business	18.1	18.4	16.6
	2021 Estimated Residential Population per Business	20.0	20.0	22.0

©2021, Sites USA, Chandler, Arizona, 480-491-1112

page 1 of 1

Demographic Source: Applied Geographic Solutions 5/2021, TIGER Geography

